

HEADQUARTERS

Apex Medical Corp.
No. 9, Min Sheng St., Tu-Cheng,
New Taipei City, 23679, Taiwan
T +886 2 2268 5568
F +886 2 2268 6525
marketing@apexmedicalcorp.com

PAN-ASIA

TAIWAN
Apex Medical Corp.
No. 9, Min Sheng St., Tu-Cheng,
New Taipei City, 23679, Taiwan
T +886 2 2268 5600 /0800 054 133
F +886 2 2268 6526
customer@apexmedicalcorp.com

STURDY INDUSTRIAL

168, Sec.1, Zhongxing Road, Wugu District,
New Taipei City 24872, Taiwan
T +886 2 2981 5245
F +886 2 2984 8208
foreign@sturdy.com.tw
www.sturdy.com.tw

CHINA

Apex Medical (Kunshan) Corp.
No. 1368, ZiZhu Road, Kunshan,
Jiang Su Province, China
T +86 512 8617 1660 Ext 1150
F +86 512 8617 8663
customer.cn@apexmedicalcorp.com

THAILAND

Apex Medical (Thailand)
No.111/152 Soi Pho Kao Yak 19,
Nawamin, Beung Kum,
Bangkok 10240,
Thailand.
T +662 018 2140 Ext 4210
sales.thai@apexmedicalcorp.com

MIDDLE EAST • AFRICA

29, Misr Liltameer Building,
Stree#10, AREA#8, Sheraton Building
Heliopolis Cairo, Egypt.
T +202 2 2671303
F +202 2 2678649
raafat.wahby@apexmedicalcorp.com

PAN-EUROPE

SPAIN
Apex Medical S.L.
Elcano 9, 6ª planta 48008
Bilbao. Vizcaya. Spain
T +34 94 4706408
F +34 94 4706409
info@apexmedical.es

UK

Apex Medical Limited
Unit 33, Great Western Business Park
McKenzie Way, Worcester ,WR4 9GN
United Kingdom
T +44 (0) 190 5774 695
sales@apexmedicalcorp.co.uk

FRANCE

Apex Medical France
4 Boulevard de la Chanterie
49124 Saint-Barthelemy d'Anjou
France
T +33 2 72 79 27 13
F +33 2 85 73 07 67
info.france@apexmedicalcorp.com

GERMANY

SLK Vertriebsgesellschaft mbH
Am Herdicksbach 18, 45731 Waltrop
Germany
T +49 (0) 231-925360-0
F +49 (0) 231-925360-29
info@slk-gmbh.de
www.slk-gmbh.de

AMERICAS

USA
Apex Medical USA
927 Mariner Street,
Brea, CA 92821, USA
T +1 714 671 3818
F +1 714 494 8173
sales.usa@apexmedicalcorp.com



Sedens series
Hybrid Seat Cushion

Care for a Healthy Life





Sedens 500

Seat Cushion with Battery Power

- Lightweight and portable, perfectly to be used in chairs or wheelchairs
- Solid foam base with medial thigh support for postural stability
- Lithium-ion battery of long duration that allows an autonomy up to 12 hours
- Visual and audible alarm enhances patients safety and security



Battery Powered
The rechargeable lithium-ion battery which provides 12 hours of operation on a full charge

Pressure Redistribution
● Alternating ● Static
■ Effective alternating system with static therapy mode in help with patient repositioning
■ 5 comfort levels for selecting

Audible Alarm
■ Low Pressure
■ Low Battery

4-Way Stretch Cover
Fluid resistant, low shear and vapor permeable top cover protect skin from friction and moisture

Non-Slip Base
It prevents the cushion from sliding out of position

Medial thigh support
to prevent thigh adduction

Foam Support
Solid base of support for postural stability

Stretch Cover

Water Resistance

Flame Resistance

Biocompatibility

Vapour Permeable

Fungistatic

4-Way Stretch

A pump carry bag with adjustable strap can fit all sizes of wheelchair

Specification

Pump	Dimension	9.8" x 4.7" x 2.2" / 25 x 12.2 x 5.7 cm		
	Weight	2.2 lb / 1.0 Kg		
	Case Material	Flame retardant ABS		
	Supply Voltage	12V DC, 1150 mA		
	Operating Cycle	10/15/20 min. selectable		
	Li-ion Battery Pack	3.78V Li-ion Battery x 2		
	Battery Operation Time	Approx. 12 hours		
	Battery Recharge Time	Approx. 4.5 hours		
Cushion	Dimension	16" x 16" x 4"	17" x 17" x 4"	18" x 16" x 4"
		41 x 42 x 10.2cm	43 x 43 x 10.2cm	46 x 41 x 10.2cm
		18" x 18" x 4"	20" x 16" x 4"	20" x 18" x 4"
		46 x 46 x 10.2cm	51 x 41 x 10.2cm	51 x 46 x 10.2cm
	Weight	2.4 lb / 1.1 Kg		
	Material	Cover: 4-Way Stretch; Cell: Nylon/PU & PU Foam; Base: Nylon/PU		
	Maximum Patient Weight	260 lb / 120 kg		
	Flame Retardant Standards	EN597-1 & EN597-2		
	HCPCS Code	E2624, A9900		

Ordering Information (For North America Only)

Model	Sedens 500					
	16" x 16"	17" x 17"	18" x 16"	18" x 18"	20" x 16"	20" x 18"
System Standard Cover	PD01905	PD01901	PD01902	PD01906	PD01903	PD01904
Cushion Standard Cover	PM02901	PM02102	PM02701	PM02902	PM02801	PM02802
Pump	PD01001					

Specifications are subject to change for improvement without notice



*"The best sitting partner
for pressure relief"*

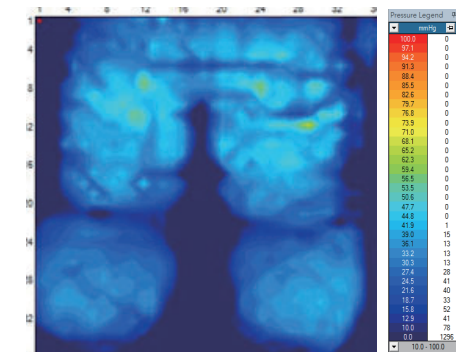
Pressure Mapping of Sedens 500

"Use a pressure redistribution cushion for preventing pressure injuries in people at high risk who are seated in a chair/wheelchair for prolonged periods, particularly if the individual is unable to perform pressure relieving maneuvers"¹

Pressure Area Index (PAI): This is a method used to measure the interface pressure of the surface. The PAI is calculated as the proportion of sensors that register interface pressures values.²

With Sedens 500

Sedens 500 offers an alternating mode (1-in-2 alternating) and alternately inflates and deflates air cells allowing pressure redistribution and encourage tissue reperfusion.



User Weight: 130lbs

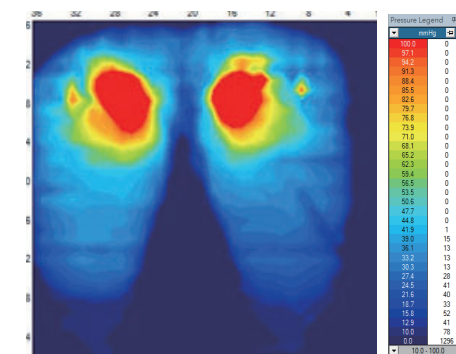
PAI

55.59%

< 32 mmHg

Without Sedens 500

Without seat cushion, the pressure is mainly concentrated around the hip area.



User Weight: 130lbs

PAI

47.39%

< 32 mmHg

References:

1. National Pressure Ulcer Advisory Panel, European Pressure Ulcer Advisory Panel and Pan Pacific Pressure Injury Alliance: Prevention and Treatment of Pressure Ulcers: Clinical Practice Guideline. (2019). Perth, Australia: Cambridge Media. Section 10:Support Surfaces: Recommendation 7.12. Page 173.

1s. Kenney L , Rithalia SVS . 1999. Mattress & bed resource file: assessment of support surfaces. J Wound Care (Suppl) ;Part 2: 1-8.



Sedens 400

Hybrid Seat Cushion

- Alternating cushion works with Apex dynamic mattress pumps to provide effective seating solution
- Lightweight and portable, perfectly to be used in chairs
- Hybrid design with alternating mode to redistribute pressure effectively
- Innovative air valve to control the amount of immersion for optimal pressure distribution



Specification

Cushion Dimension	17.3" x 16.1" x 3.5" / 44 x 41 x 9 cm
Cell Height	3.5"
Weight	2.4 lb / 1.11 Kg
Cover Material	4-Way Stretch
Cell Material	Nylon / PU
Base Material	Polyester PVC
Arrangement	6 Hybrid Cells (Cellular bladders filled with foam)
Flame Retardant Standards	EN597-1 & EN597-2
HCPCS Code	E2624

Ordering Information (For North America Only)

Model	Sedens 400
Cushion	PM02101

Specifications are subject to change for improvement without notice